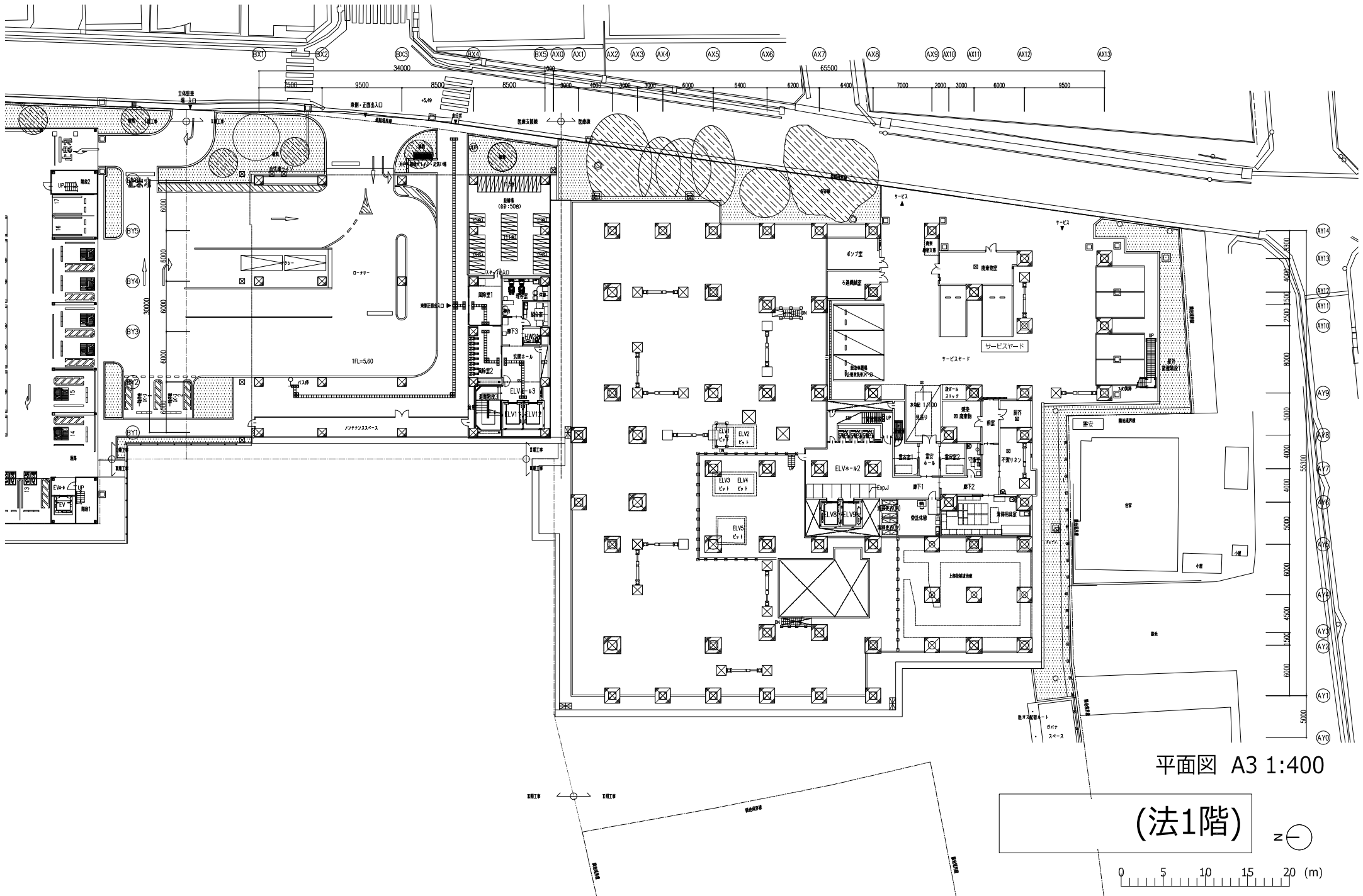


新病院各階平面図 (法1階～法13階、PHF)

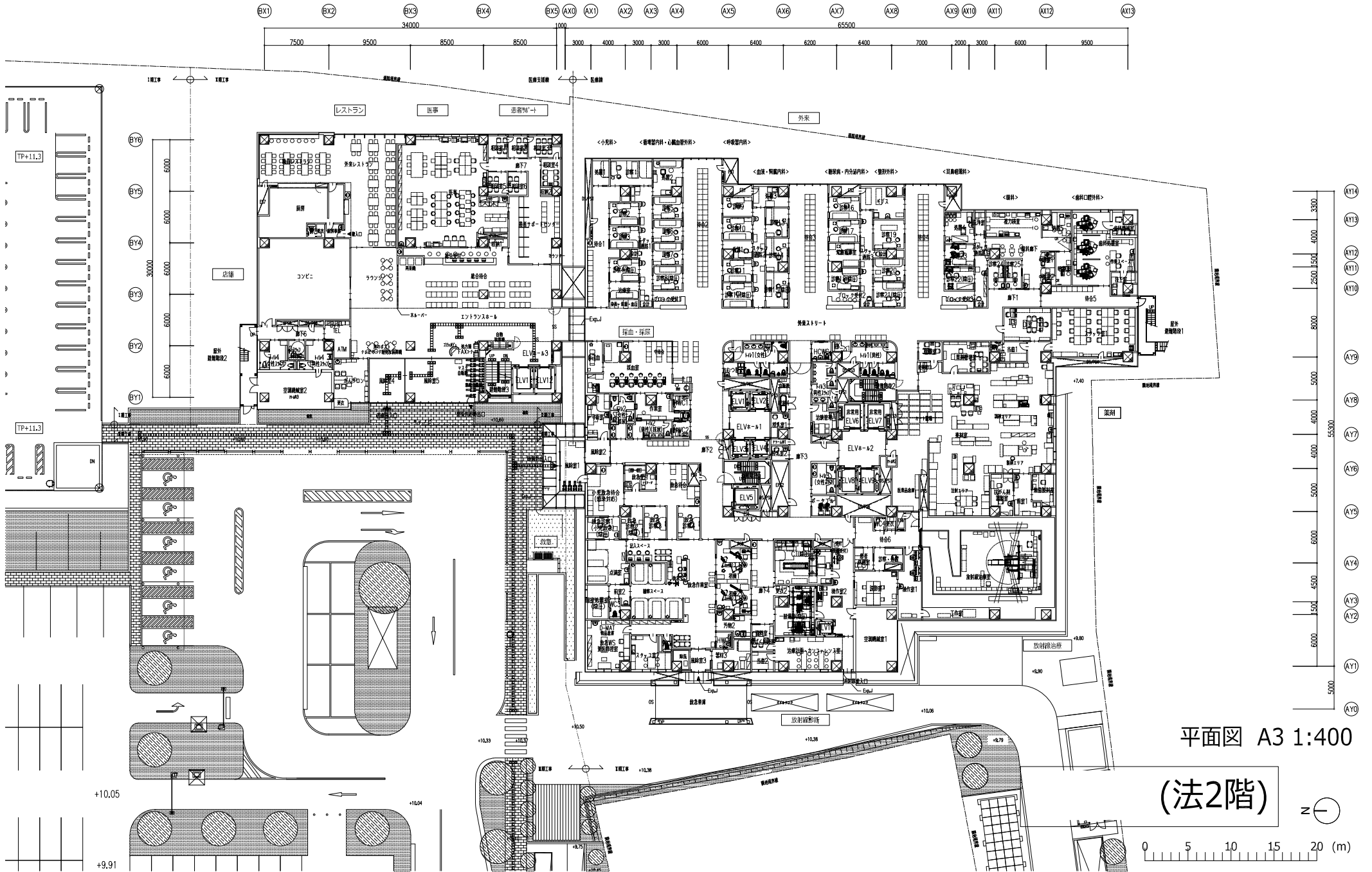


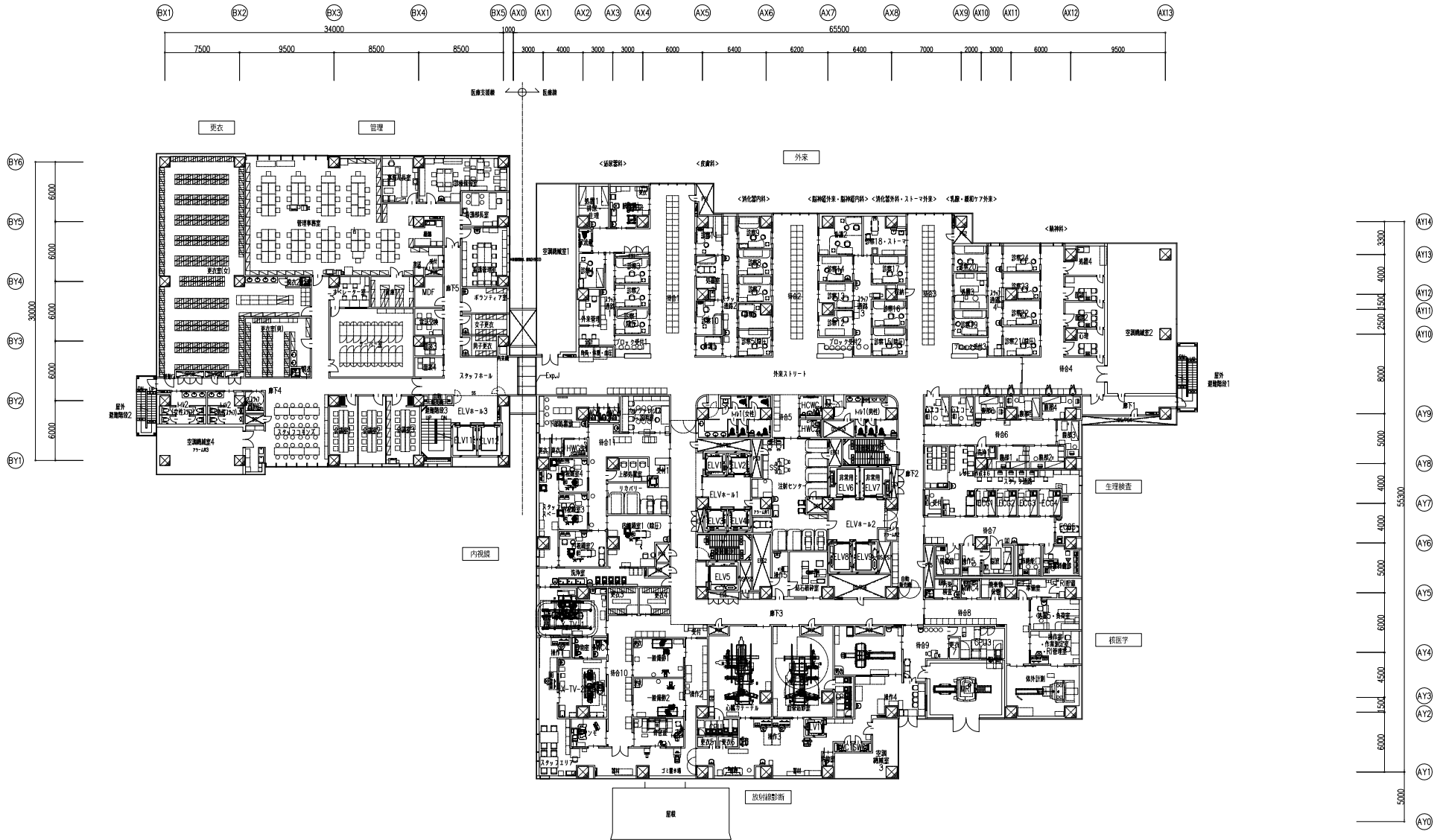
平面図 A3 1:400

(法1階)



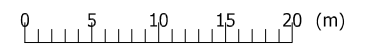
0 5 10 15 20 (m)

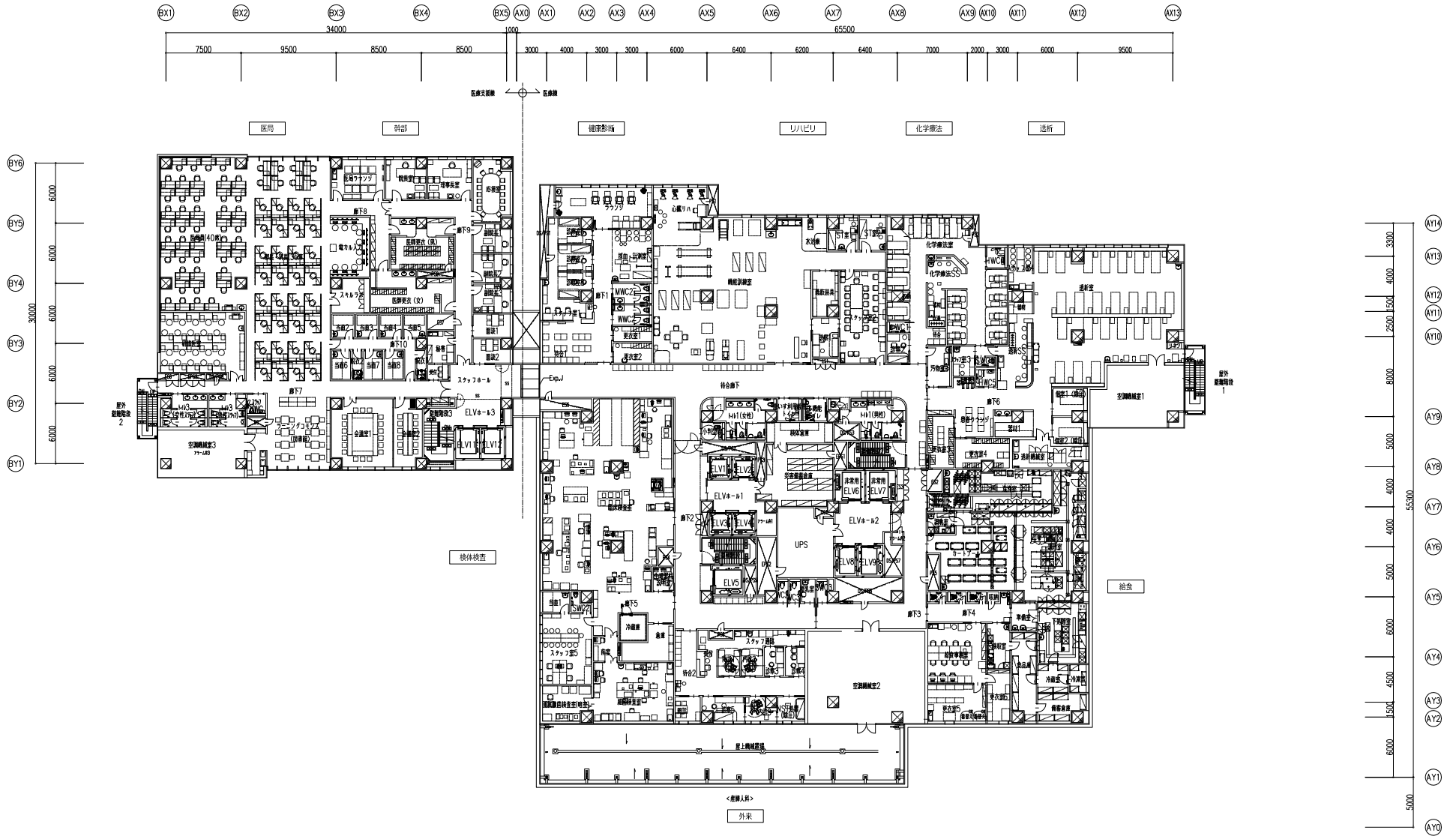




平面図 A3 1:400

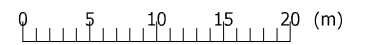
(法3階)

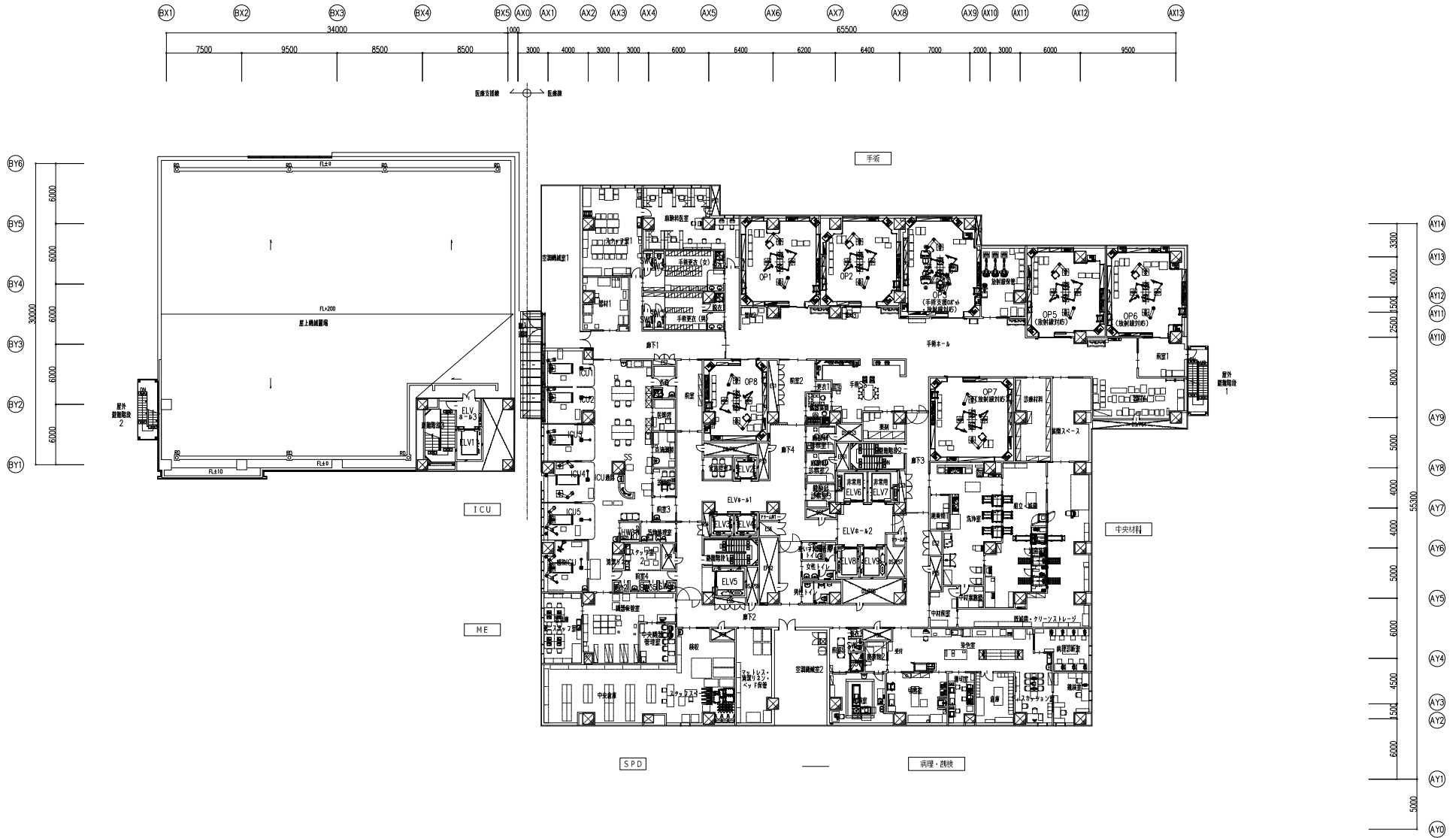




平面図 A3 1:400

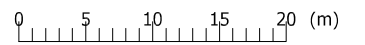
(法4階)

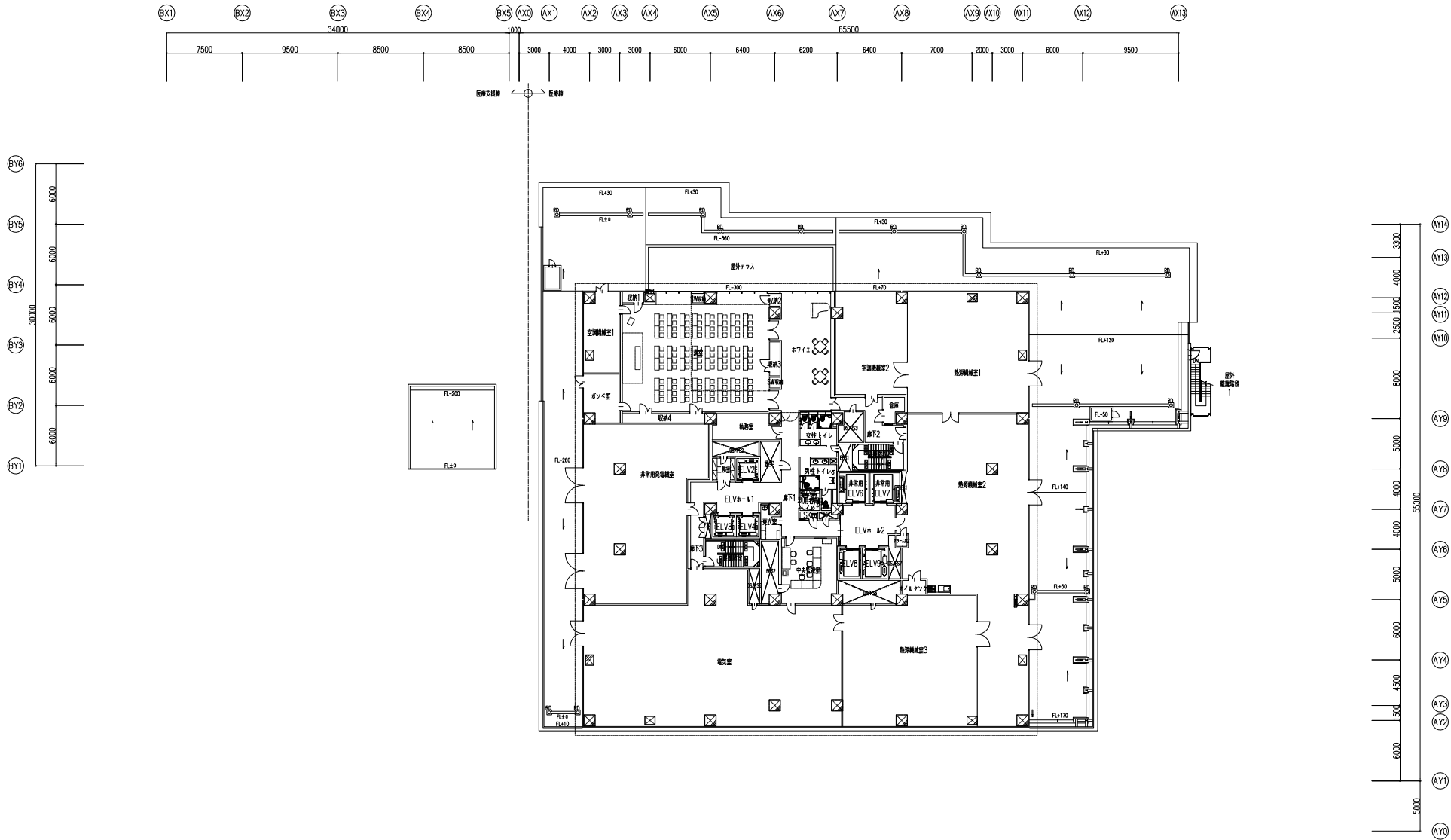




平面図 A3 1:400

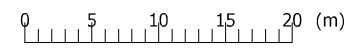
(法5階)

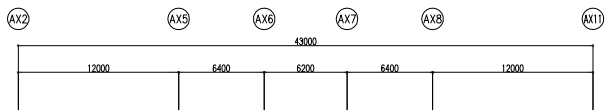




平面図 A3 1:400

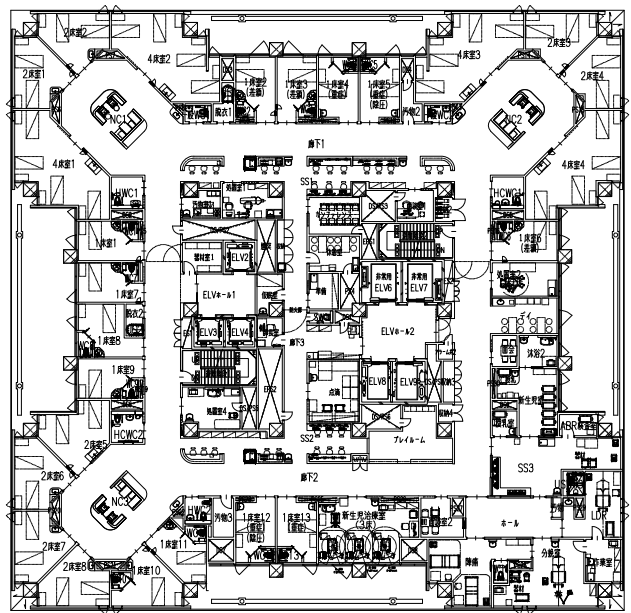
(法6階)





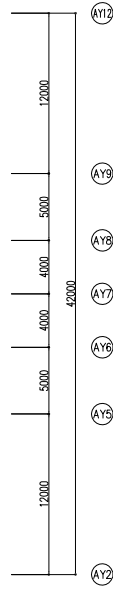
7階東

産婦人科	13 床
眼科	2 床
耳鼻咽喉科	8 床
乳腺・内分泌外科	4 床
差額室	3 床
合計	30 床



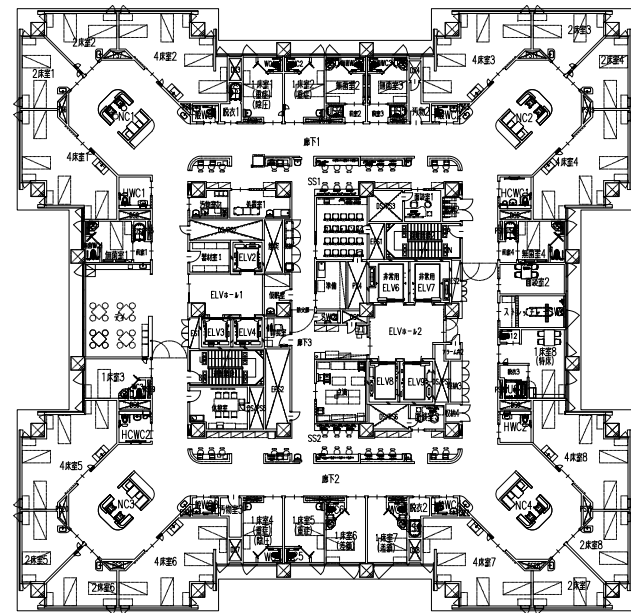
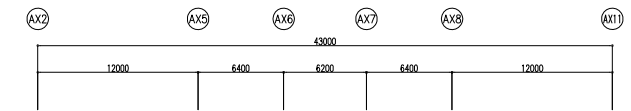
7階西

小児科	15 床
新生児治療	3 床
合計	18 床



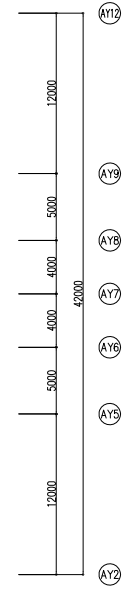
8階東

血液・腎臓内科	18 床
消化器外科	2 床
一般病棟	7 床
差額室	3 床
合計	30 床



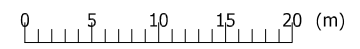
8階西

消化器外科	27 床
差額室	3 床
合計	30 床

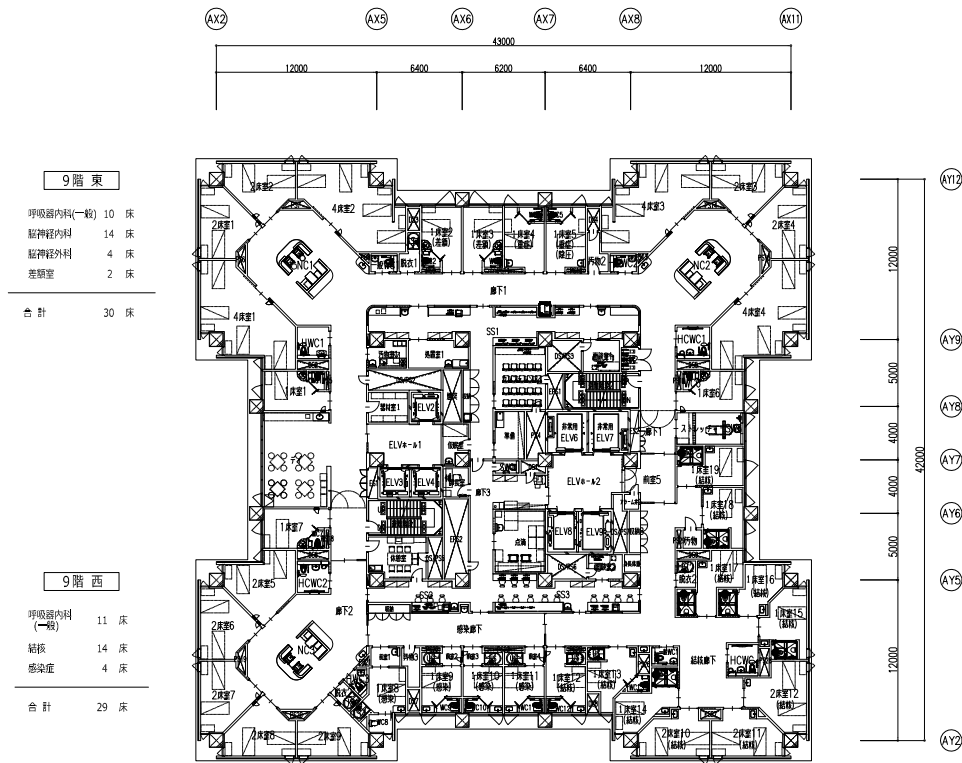


(法7階)

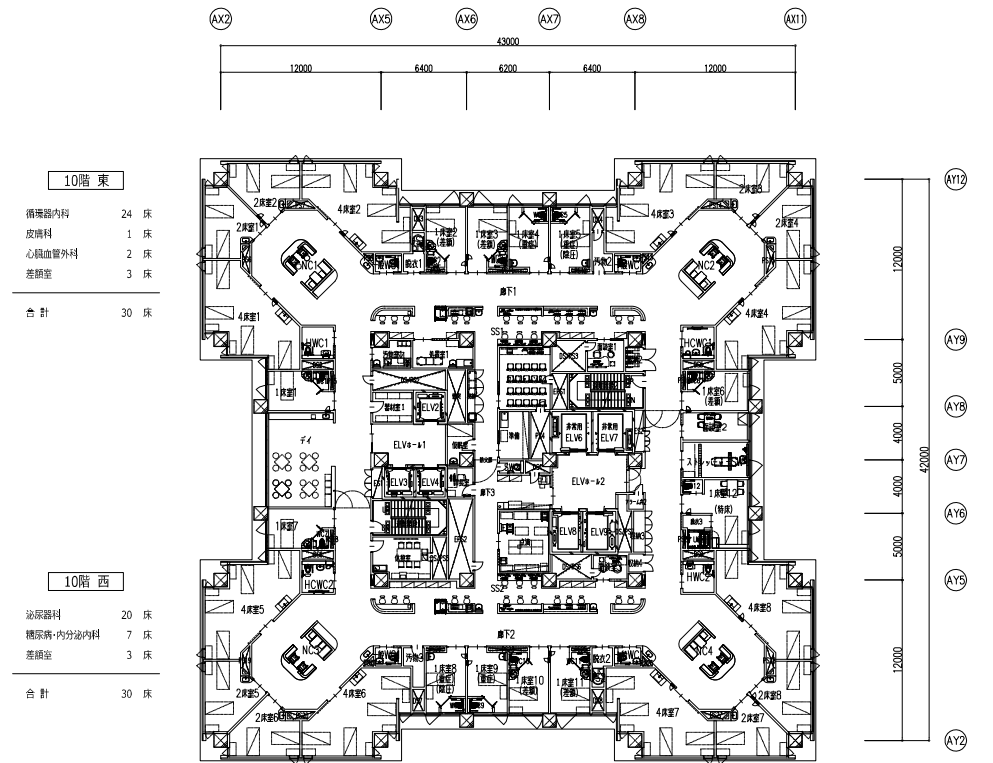
(法8階)



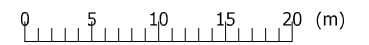
平面図 A3 1:400



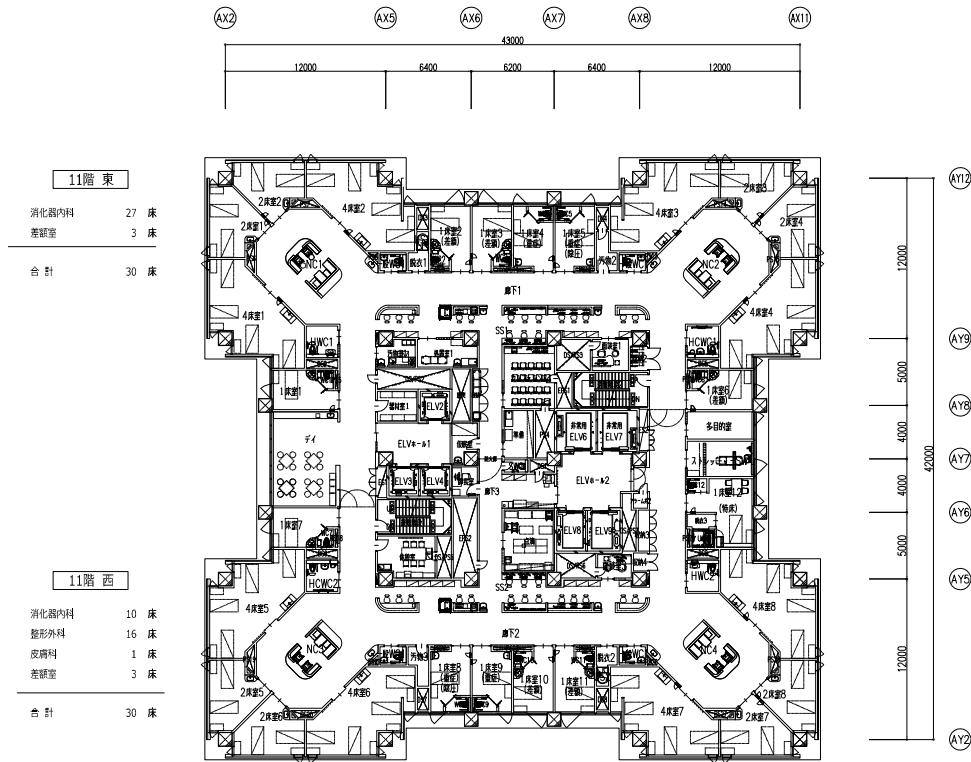
(法9階)



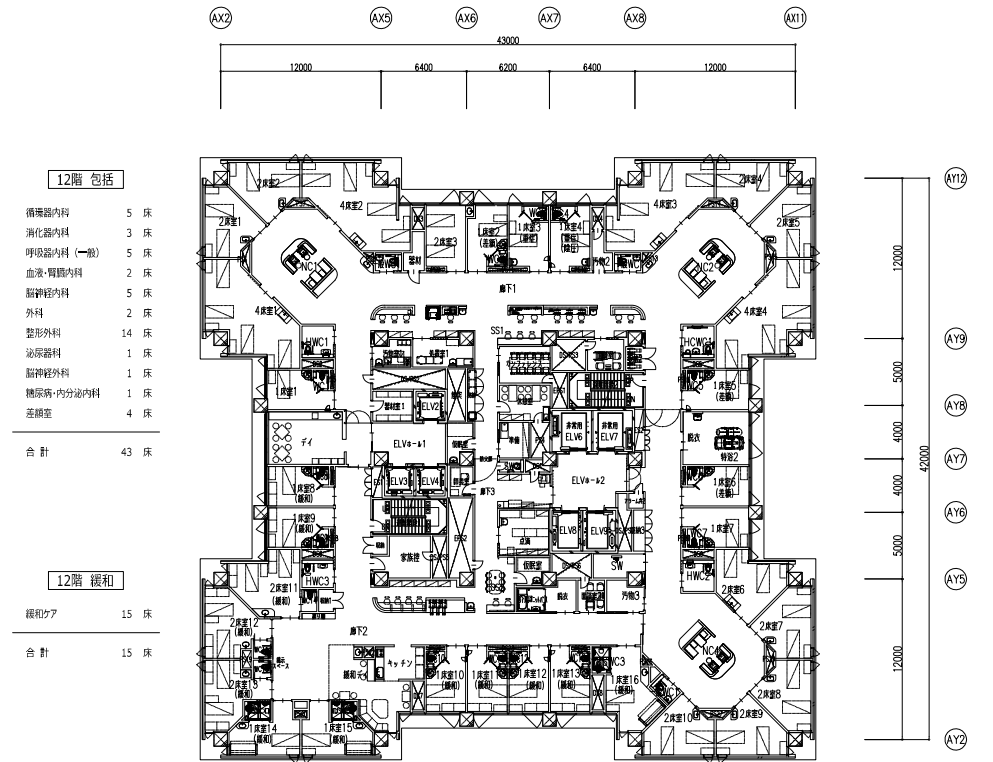
(法10階)



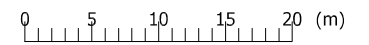
平面図 A3 1:400



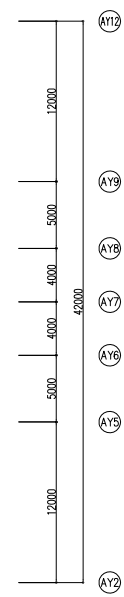
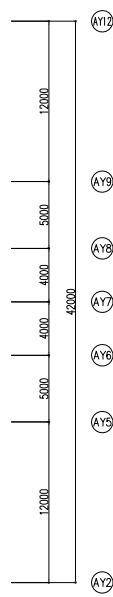
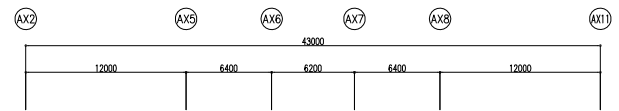
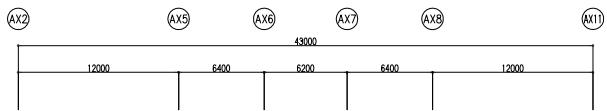
(法11階)



(法12階)

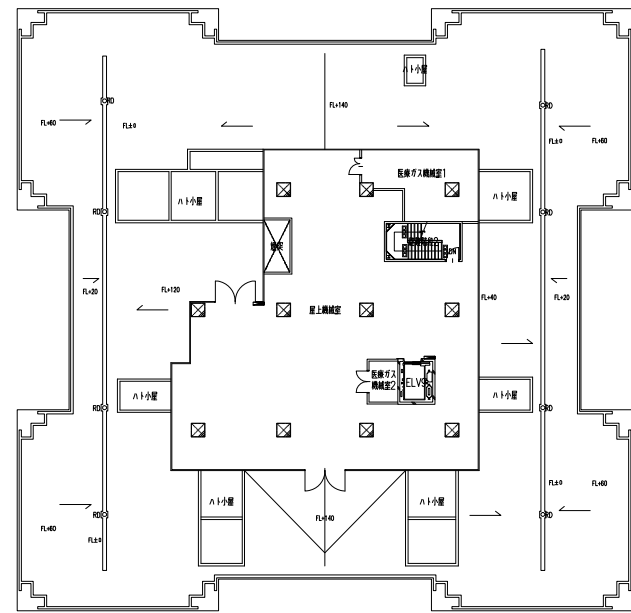
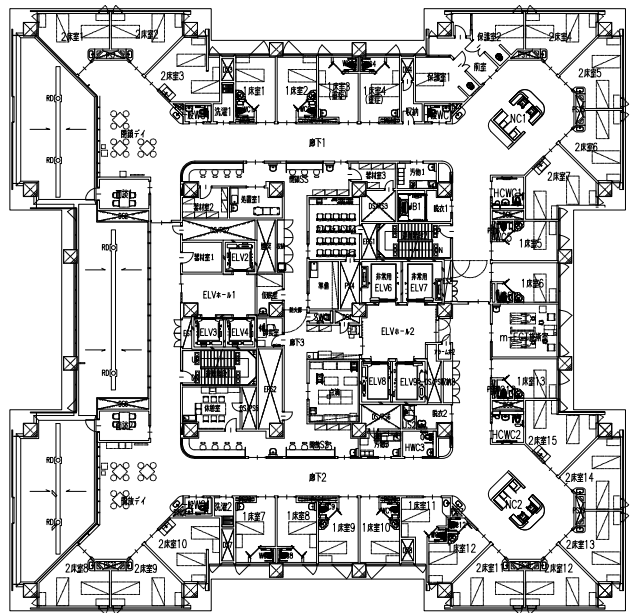


平面図 A3 1:400



13階 閉鎖	
精神	22 床
合計	22 床

13階 開放	
精神	23 床
合計	23 床



(法13階)

平面図 A3 1:400

PHF \ominus

